



Colonial Avenue, Twickenham

3 bedroom terraced house for sale

Offers in excess of £650,000
Freehold

Description

Colonial Avenue is close to Murray Park and a short walk to Whitton High Street with its array of shops, cafes and restaurants and mainline station with its frequent links to and from London Waterloo. Inviting buyers who are looking between - £650,000 to £700,000 - Buyer Search Range.

****Virtual Tour Available****

On the ground floor, there is a receiving hallway with doors leading to an attractive square bay reception room with a fireplace. Then, there is this magnificent extended Open Plan living area incorporating a formal dining area, smart NEW kitchen, solid wood flooring and a super family room area that opens to a secure south-facing private garden (sun all day), featuring a raised decked entertaining area at the rear of the garden - Ideal for those BBQ'S and wine tasting moments!

On the first floor are two generous double bedrooms with built-in wardrobes, a modern family bathroom with a separate shower and a freestanding bath. On the second floor is the main bedroom suite with a window overlooking the rear garden, skylights, built-in wardrobes and an en-suite shower room. The property also offers rear access via a gated communal pathway. Colonial Avenue is within easy access to Whitton Village and Twickenham Town centre, River Thames and the A316 and M3. It is within walking distance of



two mainline train stations that offer direct line trains to Clapham Junction and London Waterloo. Also, It's located in the catchment area of good local primary schools. Too Good to Miss!

Tenure

Freehold

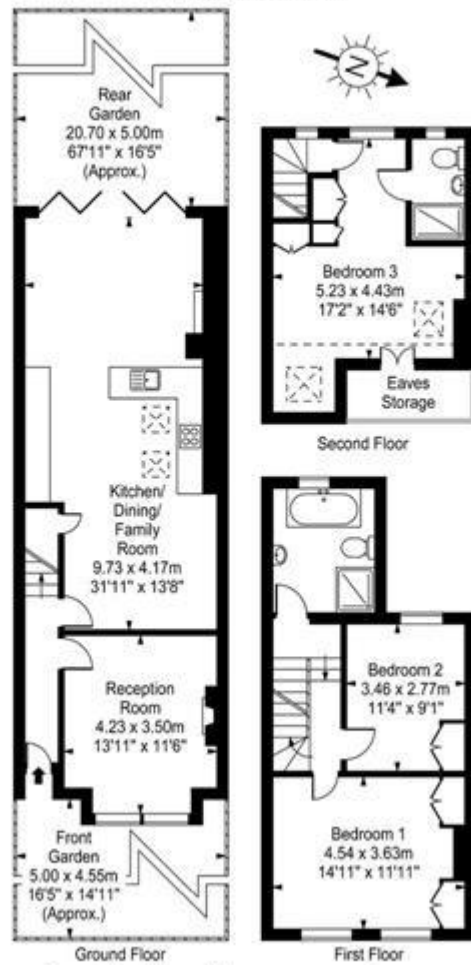
Colonial Avenue

Approx. Gross Internal Area

129 Sq M - 1393 Sq Ft

(Including Eaves Storage)

Key:
--- Reduced bedroom below 1.5m / 5ft



Every attempt is made to assure accuracy, however measurements are approximate and for illustrative purposes only. Not to scale.
Floor plan by www.frameworkphotos.co.uk



Viewing by appointment only
Castor Bay Property Ltd - Head Office
Regal House, 70 London Road, Twickenham TW1 3QS
Tel: 020 8892 5656 Email: sandra@castorbay.property Website:

