



---

# Swanwick Close, London

4 bedroom terraced house for sale

---

Offers in excess of £500,000  
Freehold

## Description

Situated moments from Putney Heath and offering excellent value for money for the first time buyers and also a great investment opportunity for the discerning Investor. (Over a 1,000 sq.ft) Council Tax Band only D

This sun trapped family home has four generous bedrooms, a generous sized reception room that opens out directly to the rear garden. A big open kitchen and dining room area with space under the stairs to create a study. Downstairs w/c and upstairs a large family bathroom.

The property further benefits from easy to maintain front and rear gardens, rear garden shed with power, rear access, Gas central heating, new double glazing, some downstairs underfloor heating and on street parking.

Be Quick! Book your space for this Saturday - Inviting Buyers who are looking between £500,000-£550,000 - Buyer Search Range.

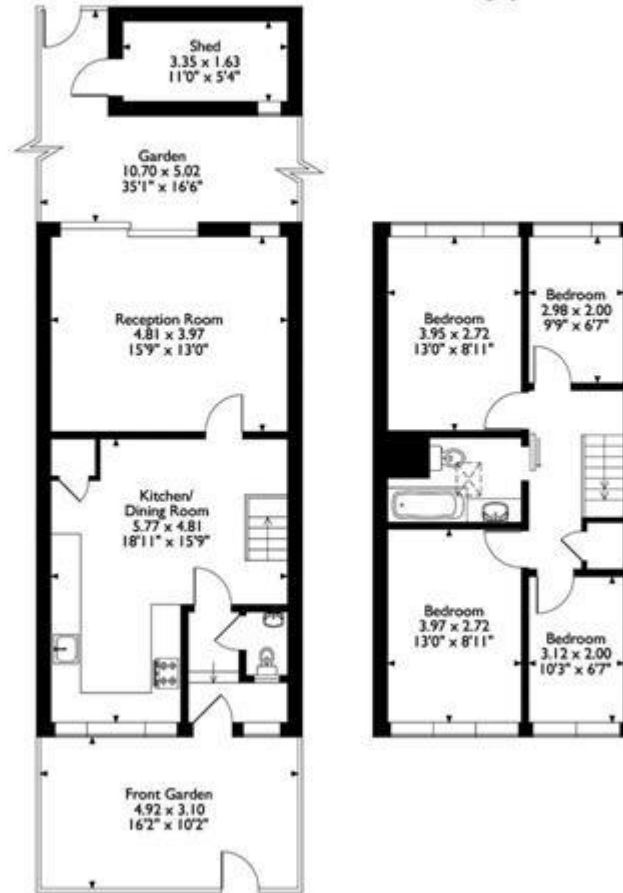
Swanwick Close is well placed for accessing a wide range of local amenities in both Putney and Barnes with the stunning Richmond Park nearly on your doorstep!

## Tenure

Freehold



Swanwick Close, London  
Approximate Gross Internal Area  
Main House = 96 Sq M/1024 Sq Ft  
Outbuilding = 5 Sq M/59 Sq Ft  
Total = 101 Sq M/1083 Sq Ft

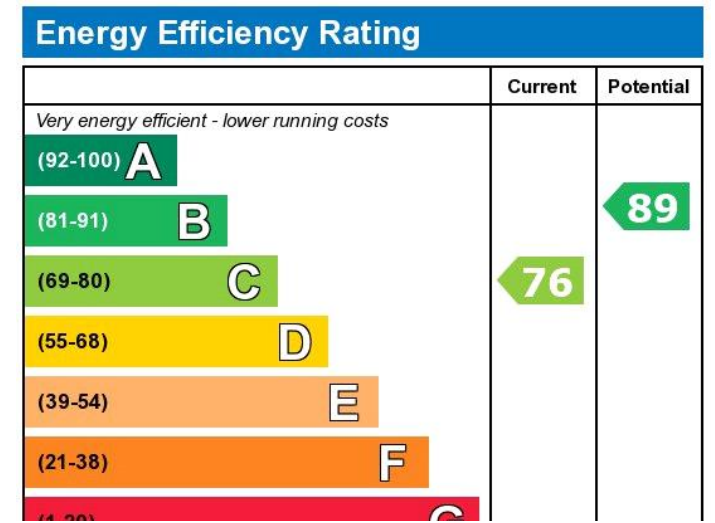


Ground Floor

First Floor

Please note that the location of doors, windows and other items are approximate and this floor plan is to be used for illustrative purposes only. Unauthorised reproduction is prohibited.





Viewing by appointment only  
 Castor Bay Property Ltd - Head Office  
 Regal House, 70 London Road, Twickenham TW1 3QS  
 Tel: 020 8892 5656 Email: [sandra@castorbay.property](mailto:sandra@castorbay.property) Website:

