



MILTON LODGE

---

# Milton Lodge, Whitton Road, Twickenham

bedroom apartment for sale

2

Guide Price £385,000 Share of  
Freehold

---

## Description

SHARE OF FREEHOLD Lovely, spacious 2 double bed, Chain-free purpose-built flat in prime location 5 mins walk Station. 2nd floor flat, residents' garden, living room with lots of natural light from double-aspect windows looking South and West. Call now to view!

Council Tax Band: D

Tenure: Share of Freehold (985 years)

Ground Rent: £0 per year

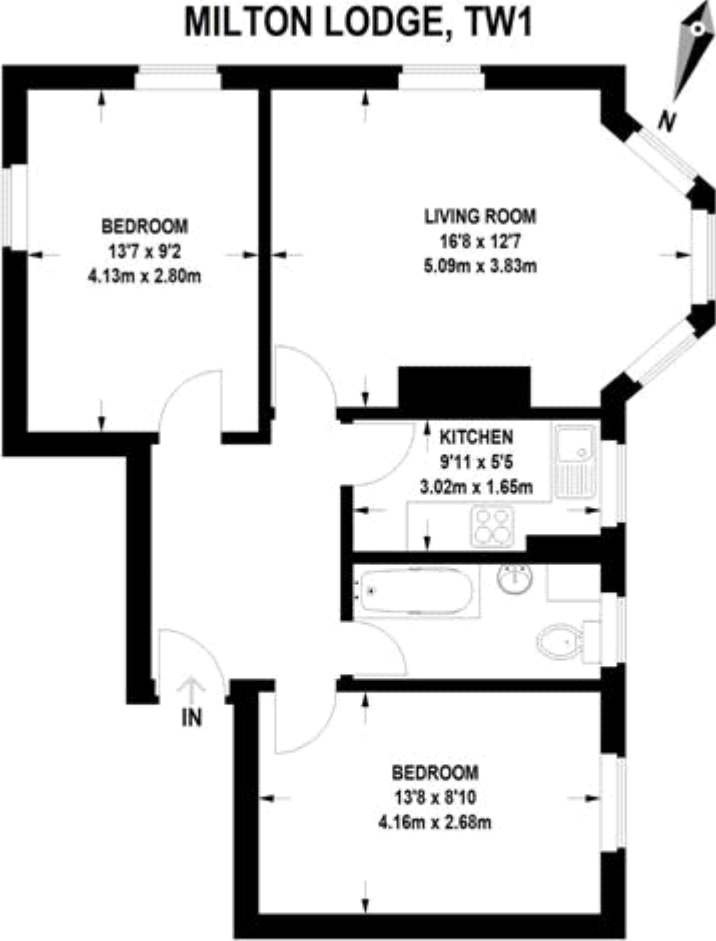
Service Charge: £2,000 per year

## Tenure

Share of Freehold



MILTON LODGE, TW1



SECOND FLOOR

APPROXIMATE GROSS INTERNAL FLOOR AREA

643 SQ FT / 59.7 SQ M

This floor plan is for identification purposes only, and is not to scale.  
Please check all dimensions, shapes and compass bearings before making any decisions reliant upon them.  
This plan must not be reproduced by any other person without permission.



| Energy Efficiency Rating                    |         |           |
|---|---------|-----------|
|   | Current | Potential |
| Very energy efficient - lower running costs |         |           |
| (92-100) <b>A</b>                           |         |           |
| (81-91) <b>B</b>                            |         |           |
| (69-80) <b>C</b>                            |         |           |
| (55-68) <b>D</b>                            | 59      | 66        |
| (39-54) <b>E</b>                            |         |           |
| (21-38) <b>F</b>                            |         |           |
| (1-20) <b>G</b>                             |         |           |

Viewing by appointment only  
 Castor Bay Property Ltd - Head Office  
 Regal House, 70 London Road, Twickenham TW1 3QS  
 Tel: 020 8892 5656 Email: [sandra@castorbay.property](mailto:sandra@castorbay.property) Website:

